

April 2nd, 2025

This notice is to inform you that UMaine will be towing a research floating barge weighing 375 tons and is 56ft wide x 32ft tall. The barge will be towed about 60 miles from Desert Narrows off Trenton, Maine to Mack Point in Searsport, Maine.

The date of the tow is highly dependent on weather and vessel traffic at Mack Point but will take place between April 7th to April 25th. Depending on vessel traffic at Mack Point, there is an optional stop at a temporary mooring in Castine near MMA if needed.

The towing company is Penobscot Bay Tractor Tug. The radio frequency for the tow will be VHF Channel 10 and monitoring 16 and 13. Maine Maritime Academy vessels will assist.

The proposed tow route is attached with all with all waypoints and detailed views for each leg of the route. The tow will be conducted at a speed of about 2 knots. The estimated width of tow route is about 100ft total for the 56ft wide barge and tow vessels.

Gear does not need to be moved for this tow given the small size of the barge.

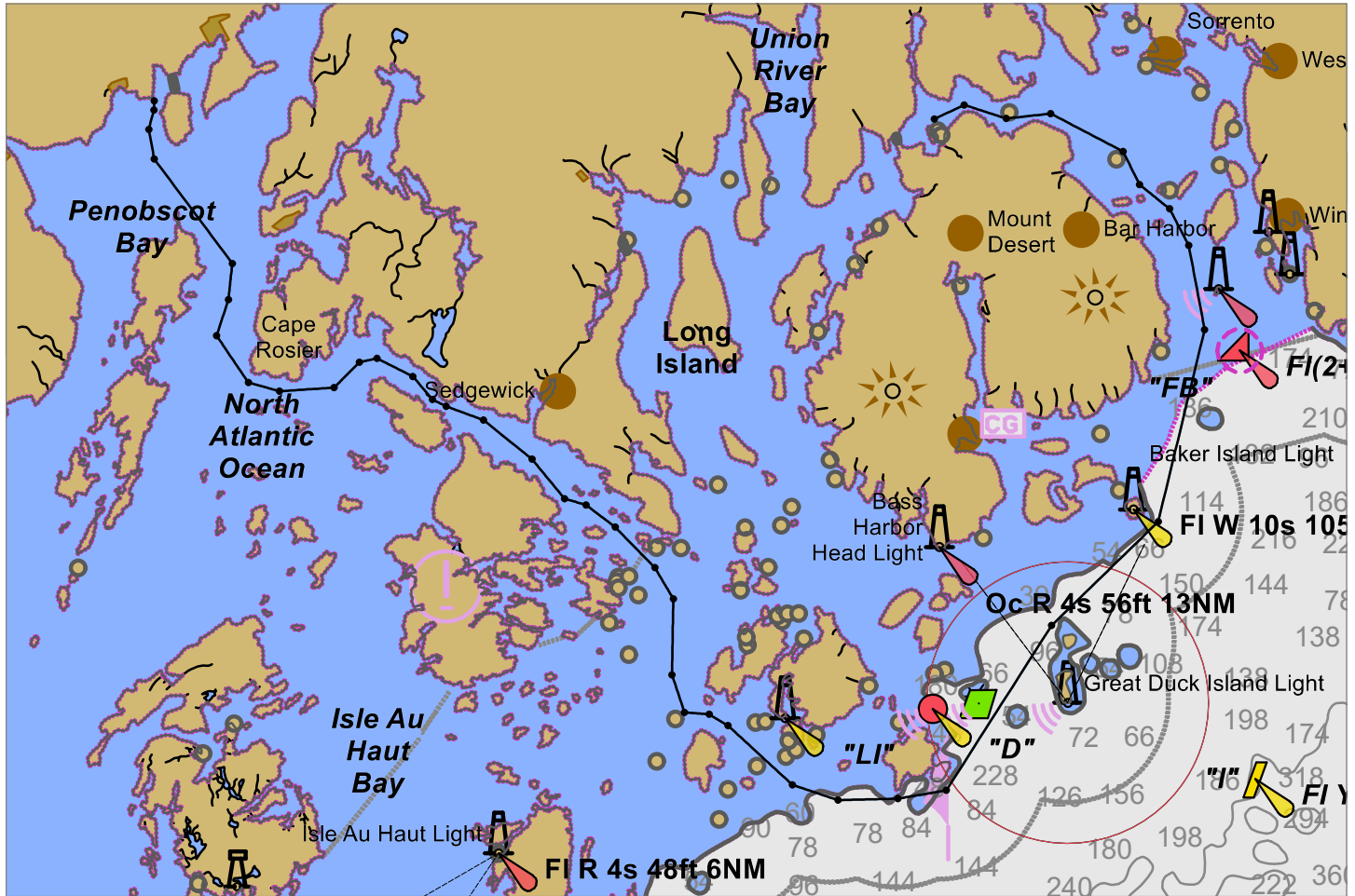
All questions related to this notice should be directed to:

Phone: (207) 581-2121

Email: frontoffice@composites.maine.edu

Trenton to Searsport

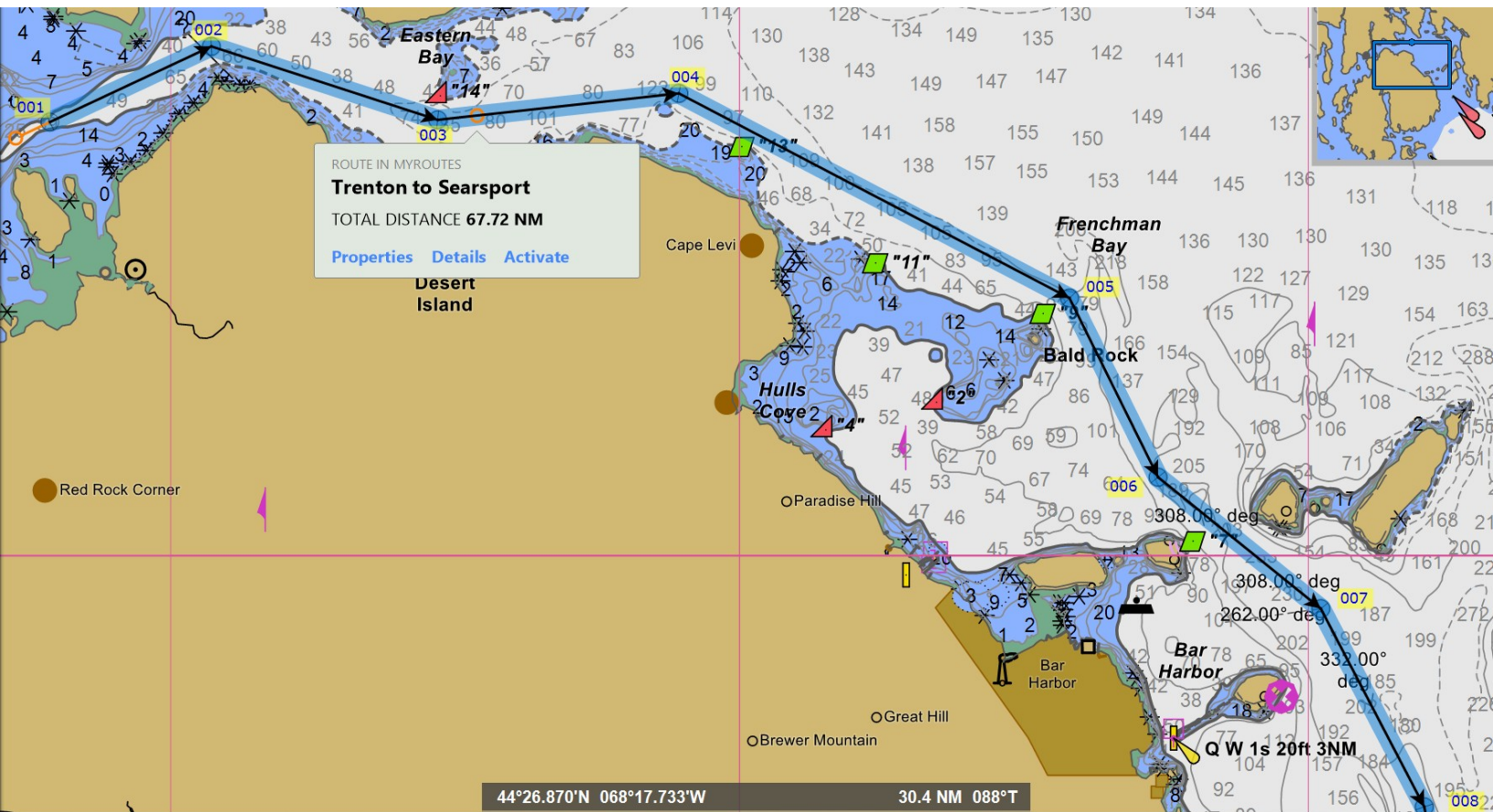
Total Distance: 67.716 nm Total Time: 22 hours 35 mins Depart: 2025-04-07 08:00 ETA: Apr 8 06:34

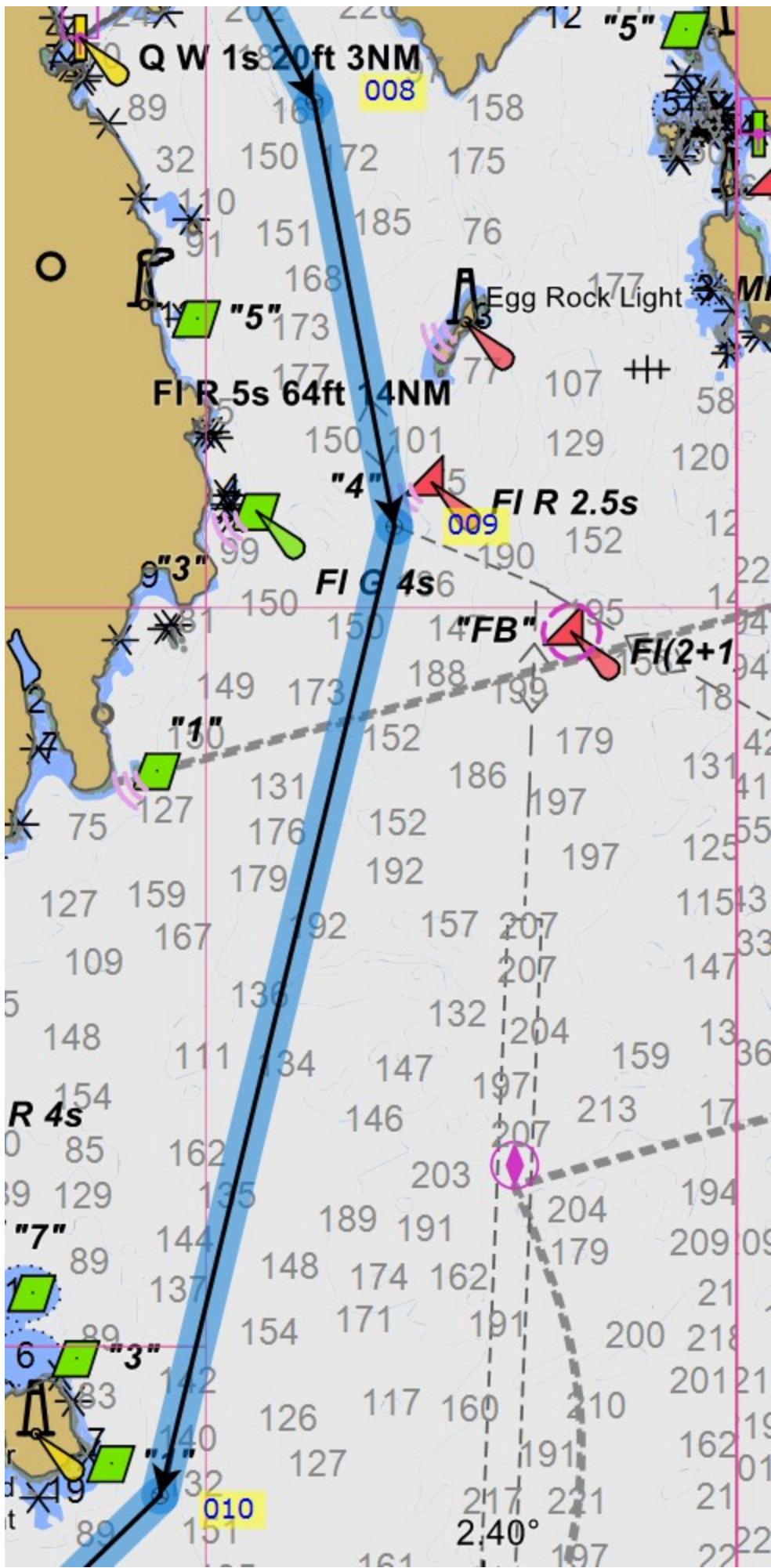


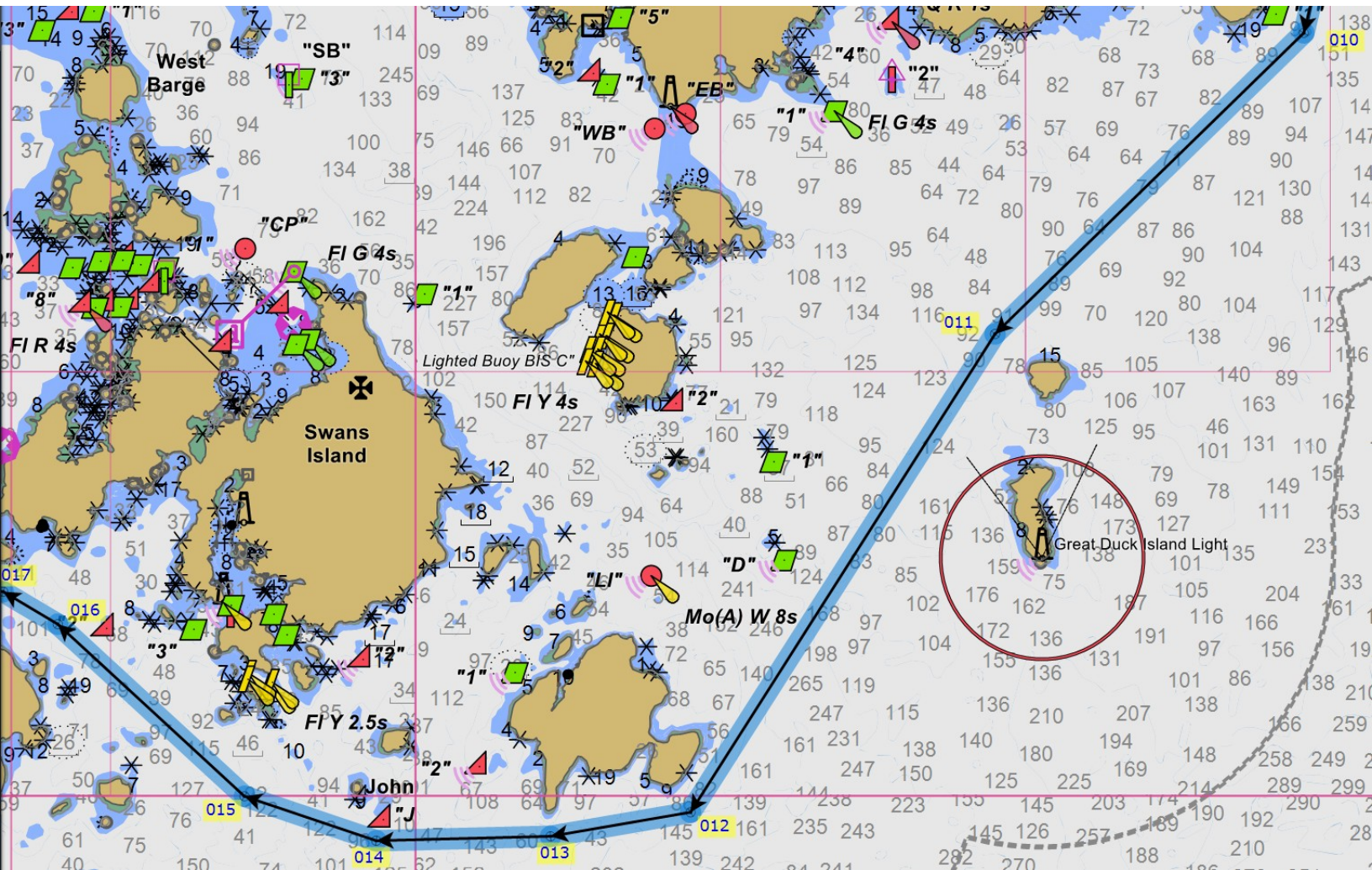
NOT FOR NAVIGATION

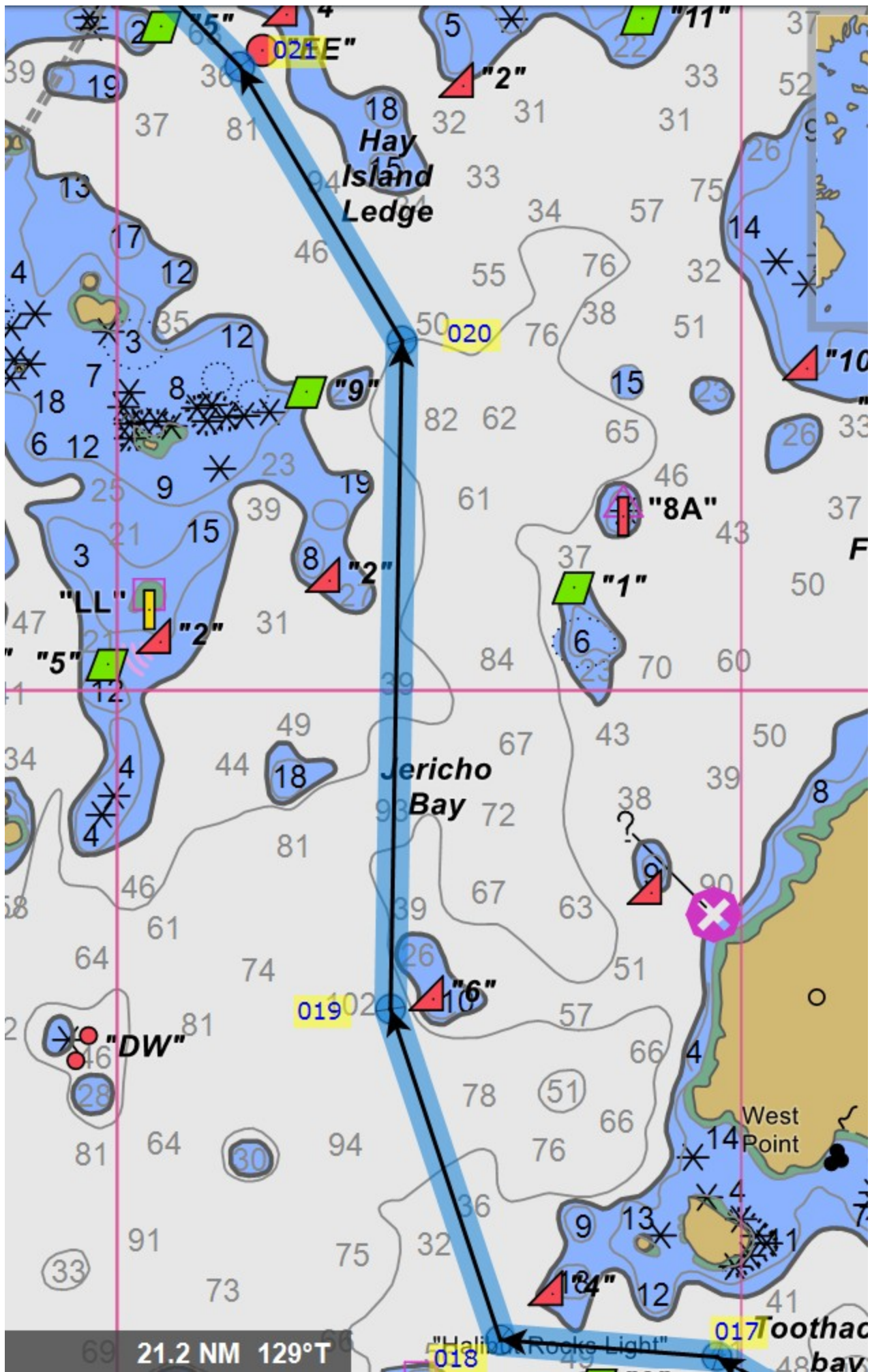
Leg to	Bearing	Speed	Turn	Distance	ETA (TTG)	UKC	End Position
002	064.8° T 080.2° M	3.00 kn	43° to starboard	1.007 nm	08:20 (20 mins)	14.9 ft	44°26.885'N 068°19.179'W
003	108.0° T 123.4° M	3.00 kn	24° to port	1.344 nm	08:47 (27 mins)	14.9 ft	44°26.469'N 068°17.389'W
004	083.7° T 099.1° M	3.00 kn	33° to starboard	1.371 nm	09:14 (27 mins)	44.7 ft	44°26.619'N 068°15.481'W
005	117.7° T 133.0° M	3.00 kn	36° to starboard	2.493 nm	10:04 (50 mins)	44.7 ft	44°25.460'N 068°12.390'W
006	153.7° T 169.1° M	3.00 kn	24° to port	1.131 nm	10:27 (23 mins)	44.7 ft	44°24.445'N 068°11.689'W
007	129.0° T 144.4° M	3.00 kn	23° to starboard	1.184 nm	10:50 (24 mins)	44.7 ft	44°23.700'N 068°10.401'W
008	152.5° T 167.9° M	3.00 kn	16° to starboard	1.267 nm	11:16 (25 mins)	104.8 ft	44°22.577'N 068°09.583'W
009	169.3° T 184.7° M	3.00 kn	24° to starboard	2.628 nm	12:08 (53 mins)	104.8 ft	44°19.993'N 068°08.903'W
010	193.6° T 208.9° M	3.00 kn	32° to starboard	6.070 nm	14:10 (2 hours 1 min)	44.7 ft	44°14.092'N 068°10.890'W
011	225.7° T 241.0° M	3.00 kn	13° to port	4.567 nm	15:41 (1 hour 31 mins)	44.7 ft	44°10.901'N 068°15.447'W
012	212.5° T 227.8° M	3.00 kn	47° to starboard	6.014 nm	17:41 (2 hours)	44.7 ft	44°05.825'N 068°19.941'W
013	260.2° T 275.5° M	3.00 kn	8° to starboard	1.505 nm	18:12 (30 mins)	14.9 ft	44°05.569'N 068°22.007'W
014	268.6° T 283.8° M	3.00 kn	20° to starboard	1.848 nm	18:48 (37 mins)	44.7 ft	44°05.522'N 068°24.579'W
015	288.7° T 303.9° M	3.00 kn	24° to starboard	1.475 nm	19:18 (30 mins)	44.7 ft	44°05.994'N 068°26.525'W
016	312.7° T 328.0° M	3.00 kn	11° to port	2.693 nm	20:12 (54 mins)	14.9 ft	44°07.822'N 068°29.279'W
017	300.8° T 316.1° M	3.00 kn	26° to port	0.673 nm	20:25 (13 mins)	14.9 ft	44°08.167'N 068°30.085'W
018	274.6° T 289.8° M	3.00 kn	67° to starboard	0.758 nm	20:41 (15 mins)	14.9 ft	44°08.227'N 068°31.138'W
019	341.7° T 356.9° M	3.00 kn	19° to starboard	1.220 nm	21:05 (24 mins)	14.9 ft	44°09.385'N 068°31.671'W
020	001.0° T 016.2° M	3.00 kn	31° to port	2.339 nm	21:52 (47 mins)	14.9 ft	44°11.723'N 068°31.616'W
021	329.5° T 344.7° M	3.00 kn	13° to port	1.113 nm	22:14 (22 mins)	14.9 ft	44°12.682'N 068°32.404'W
022	315.7° T 330.9° M	3.00 kn	8° to port	1.740 nm	22:49 (35 mins)	14.9 ft	44°13.927'N 068°34.099'W
023	307.5° T 322.7° M	3.00 kn	21° to port	1.122 nm	23:11 (22 mins)	14.9 ft	44°14.610'N 068°35.342'W
024	286.2° T 301.4° M	3.00 kn	34° to starboard	0.682 nm	23:25 (14 mins)	14.9 ft	44°14.800'N 068°36.257'W
025	320.5° T 335.8° M	3.00 kn	11° to port	1.576 nm	23:56 (32 mins)	14.9 ft	44°16.016'N 068°37.655'W

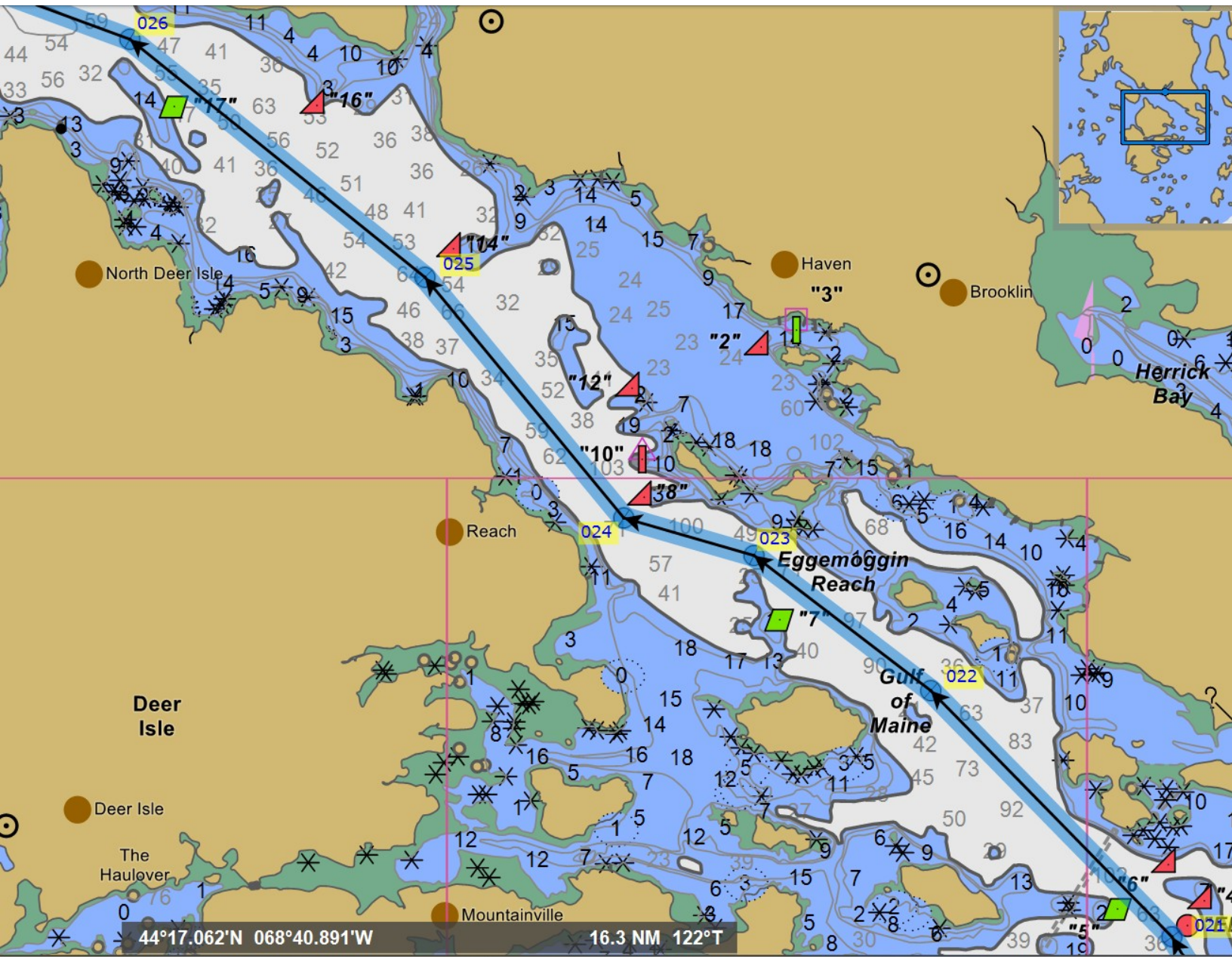
Leg to	Bearing	Speed	Turn	Distance	ETA (TTG)	UKC	End Position
026	309.0° T 324.2° M	3.00 kn	18° to port	1.911 nm	Apr 8 00:35 (38 mins)	14.9 ft	44°17.219'N 068°39.730'W
027	290.3° T 305.5° M	3.00 kn	6° to starboard	1.217 nm	Apr 8 00:59 (24 mins)	2.7 ft	44°17.640'N 068°41.324'W
028	296.5° T 311.7° M	3.00 kn	23° to starboard	0.471 nm	Apr 8 01:08 (9 mins)	44.7 ft	44°17.851'N 068°41.912'W
029	319.9° T 335.1° M	3.00 kn	23° to port	0.926 nm	Apr 8 01:27 (19 mins)	14.9 ft	44°18.559'N 068°42.746'W
030	296.7° T 311.9° M	3.00 kn	39° to port	1.233 nm	Apr 8 01:52 (25 mins)	14.9 ft	44°19.113'N 068°44.285'W
031	257.5° T 272.7° M	3.00 kn	32° to port	0.543 nm	Apr 8 02:02 (11 mins)	14.9 ft	44°18.996'N 068°45.027'W
032	224.9° T 240.1° M	3.00 kn	41° to starboard	1.103 nm	Apr 8 02:25 (22 mins)	14.9 ft	44°18.214'N 068°46.115'W
033	266.2° T 281.4° M	3.00 kn	19° to starboard	1.670 nm	Apr 8 02:58 (33 mins)	44.7 ft	44°18.104'N 068°48.444'W
034	285.6° T 300.8° M	3.00 kn	40° to starboard	0.993 nm	Apr 8 03:18 (20 mins)	104.8 ft	44°18.371'N 068°49.780'W
035	326.0° T 341.2° M	3.00 kn	51° to starboard	1.732 nm	Apr 8 03:52 (35 mins)	44.7 ft	44°19.807'N 068°51.134'W
036	017.9° T 033.1° M	3.00 kn	11° to port	1.169 nm	Apr 8 04:16 (23 mins)	44.7 ft	44°20.919'N 068°50.632'W
037	006.2° T 021.3° M	3.00 kn	42° to port	1.114 nm	Apr 8 04:38 (22 mins)	44.7 ft	44°22.027'N 068°50.464'W
038	323.3° T 338.5° M	3.00 kn	26° to starboard	3.994 nm	Apr 8 05:58 (1 hour 20 mins)	14.9 ft	44°25.230'N 068°53.802'W
039	349.6° T 004.7° M	3.00 kn	25° to starboard	0.923 nm	Apr 8 06:16 (18 mins)	14.9 ft	44°26.138'N 068°54.037'W
040	014.8° T 030.0° M	3.00 kn	12° to port	0.614 nm	Apr 8 06:29 (12 mins)	14.9 ft	44°26.732'N 068°53.817'W
041	002.7° T 017.8° M	3.00 kn		0.283 nm	Apr 8 06:34 (6 mins)	14.9 ft	44°27.014'N 068°53.799'W

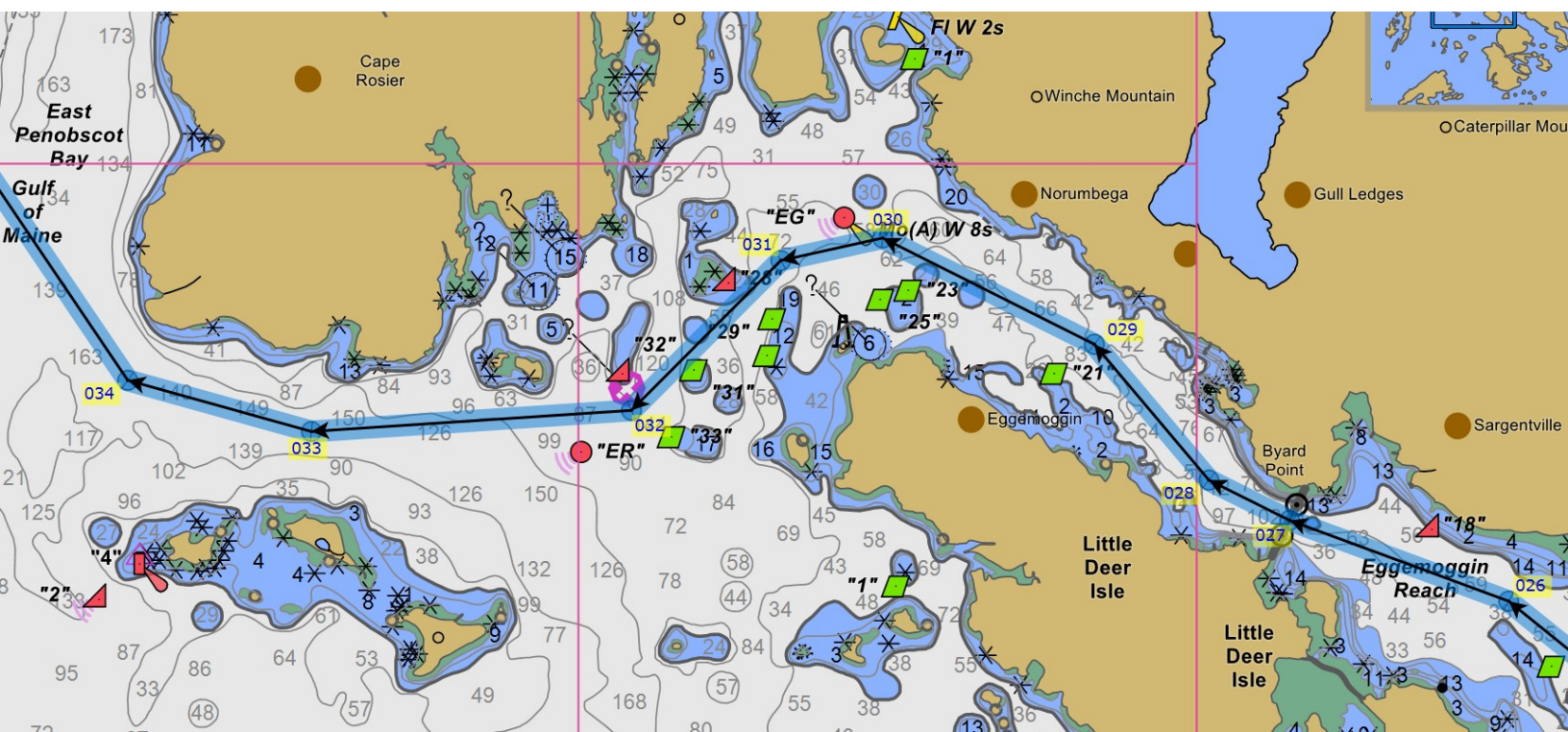


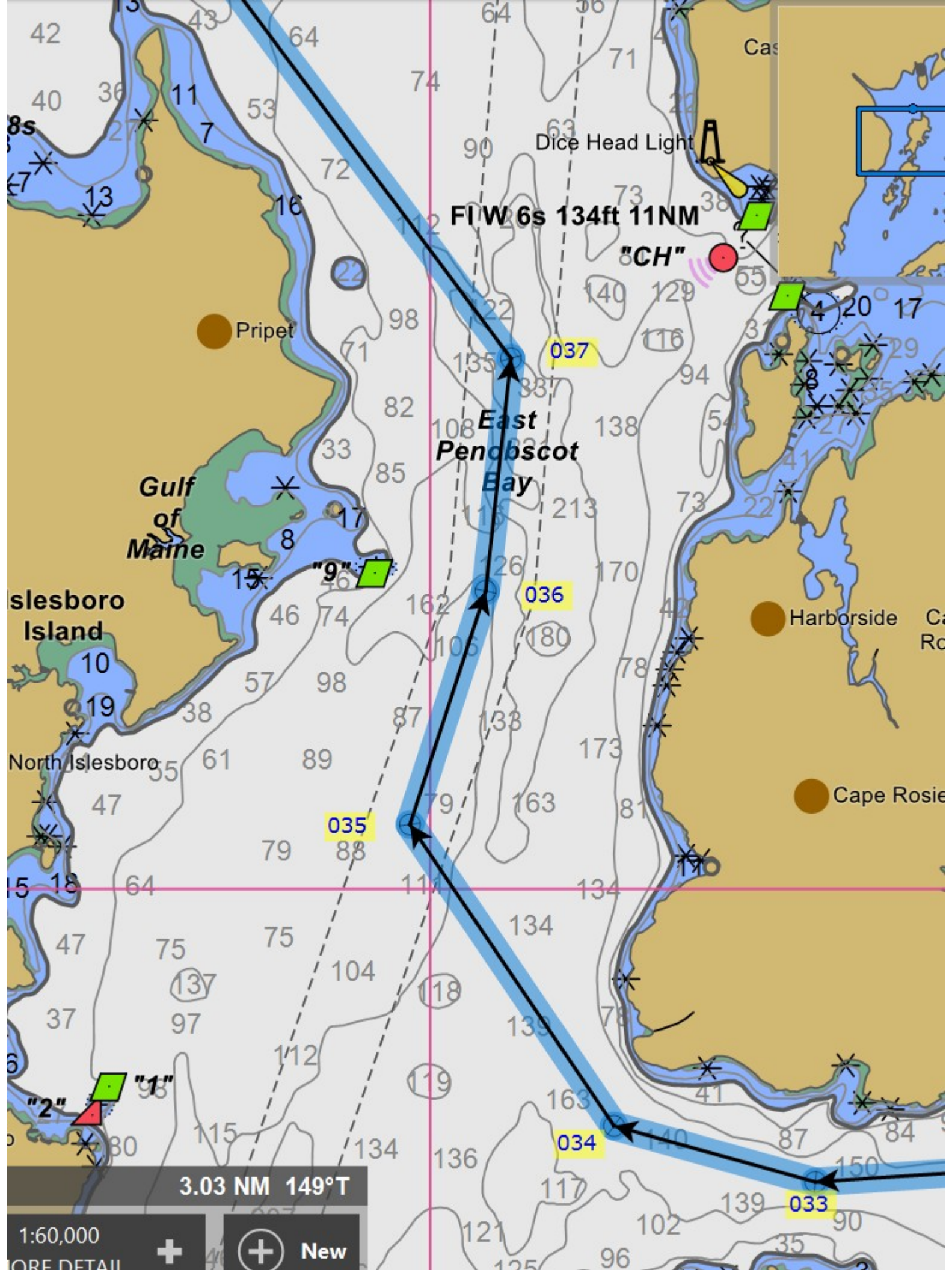


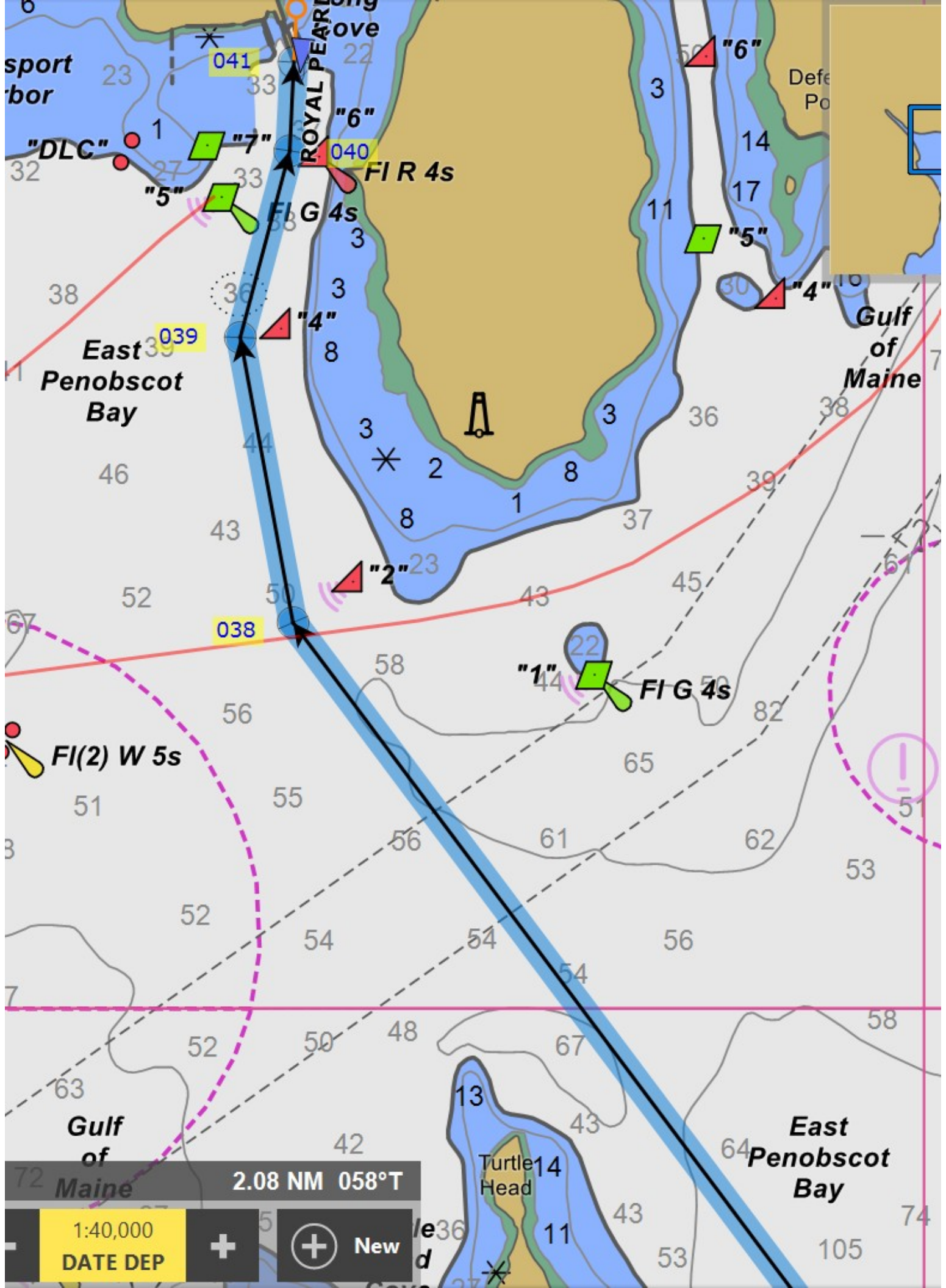












2.08 NM 058°T

1:40,000
DATE DEP

+ New